

**FJ1 Series  
Front Through  
Terminal Blocks**

**General Description**

FJ1 series front through terminal blocks adopt front-entry connection, a screwdriver is enough in wiring operation. The conductor and screwdriver come in parallel from the same direction, thereby get the best visibility to the connection point. After the conductor is inserted into the connection compartment, the screwdriver is removed and the conductor automatically realizes connect tightly. The outstanding feature is easy, fast operation and saving time.

Type	FJ1-2.5	FJ1-2.5/3
<b>IEC 60947-7-1 Standard</b>		
Voltage / Impulse Voltage	800 V/8 kV	800 V/8 kV
<b>Maximum Current</b>	<b>24 A</b>	<b>24 A</b>
Pollution Degree/Voltage Category/ Material Group	3/III/ I	3/III/ I
Insulating Material	PA66	PA66
Inflammability Class (acc. to UL94)	V0	V0
<b>Connection Capacity</b>		
<b>Wire Range</b>	0.08~2.5 mm <sup>2</sup>	0.08~2.5 mm <sup>2</sup>
American Wire Gauge	28~12 AWG	28~12 AWG
Wiring Type	Front-entry	Front-entry
Stripping Length	8~9 mm/0.33 in	8~9 mm/0.33 in
<b>Dimensions</b>		
Length	53 mm/2.09 in	64 mm/2.52 in
<b>Width</b>	<b>5 mm/0.197 in</b>	<b>5 mm/0.197 in</b>
Height	28 mm/1.10 in	28 mm/1.10 in



**FJ1 Series  
Front Through Earth  
Terminal Blocks**

**General Description**

FJ1 Series front through earth terminal blocks are essential products as a result of protecting the circuit and preventing people from electric (shock) accidents. The earth type is available in the same shape as the universal type, distinguished by green-yellow housing.

Type	FJ1-2.5/D	FJ1-2.5/D3
<b>IEC 60947-7-2 Standard</b>		
Impulse Voltage	8 kV	8 kV
Pollution Degree/Voltage Category/ Material Group	3/III/ I	3/III/ I
Insulating Material	PA66	PA66
Inflammability Class (acc. to UL94)	V0	V0
<b>Connection Capacity</b>		
<b>Wire Range</b>	0.08~2.5 mm <sup>2</sup>	0.08~2.5 mm <sup>2</sup>
American Wire Gauge	28~12 AWG	28~12 AWG
Wiring Type	Front-entry	Front-entry
Stripping Length	8~9 mm/0.33 in	8~9 mm/0.33 in
<b>Dimensions</b>		
Length	54 mm/2.13 in	64 mm/2.52 in
<b>Width</b>	<b>5 mm/0.197 in</b>	<b>5 mm/0.197 in</b>
Height	28 mm/1.10 in	28 mm/1.10 in



FJ1-2.5/4	FJ1-4	FJ1-4/3	FJ1-4/4
800 V/8 kV <b>20 A</b>	800 V/8 kV <b>32 A</b>	800 V/8 kV <b>32 A</b>	800 V/8 kV <b>26 A</b>
3/III/ I	3/III/ I	3/III/ I	3/III/ I
PA66 V0	PA66 V0	PA66 V0	PA66 V0
0.08~2.5 mm <sup>2</sup> 28~12 AWG Front-entry 8~9 mm/0.33 in	0.08~4 mm <sup>2</sup> 28~12 AWG Front-entry 9~10 mm/0.37 in	0.08~4 mm <sup>2</sup> 28~12 AWG Front-entry 9~10 mm/0.37 in	0.08~4 mm <sup>2</sup> 28~12 AWG Front-entry 9~10 mm/0.37 in
75 mm/2.95 in <b>5 mm/0.197 in</b> 28 mm/1.10 in	59 mm/2.32 in <b>6 mm/0.236 in</b> 29 mm/1.14 in	73.5 mm/2.89 in <b>6 mm/0.236 in</b> 29 mm/1.14 in	86 mm/3.39 in <b>6 mm/0.236 in</b> 29 mm/1.14 in



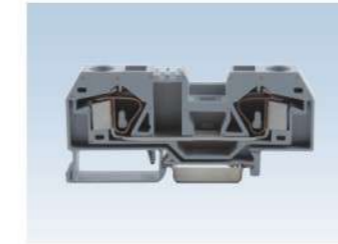
FJ1-2.5/D4	FJ1-4/D	FJ1-4/D3	FJ1-4/D4
8 kV	8 kV	8 kV	8 kV
3/III/ I	3/III/ I	3/III/ I	3/III/ I
PA66 V0	PA66 V0	PA66 V0	PA66 V0
0.08~2.5 mm <sup>2</sup> 28~12 AWG Front-entry 8~9 mm/0.33 in	0.08~4 mm <sup>2</sup> 28~12 AWG Front-entry 9~10 mm/0.37 in	0.08~4 mm <sup>2</sup> 28~12 AWG Front-entry 9~10 mm/0.37 in	0.08~4 mm <sup>2</sup> 28~12 AWG Front-entry 9~10 mm/0.37 in
75 mm/2.95 in <b>5 mm/0.197 in</b> 28 mm/1.10 in	59 mm/2.32 in <b>6 mm/0.236 in</b> 29 mm/1.14 in	73.5 mm/2.89 in <b>6 mm/0.236 in</b> 29 mm/1.14 in	86 mm/3.39 in <b>6 mm/0.236 in</b> 29 mm/1.14 in



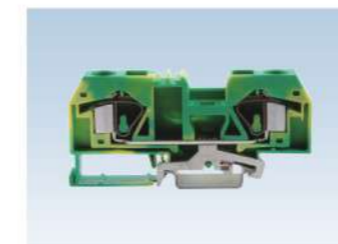
Type	FJ1-6	FJ1-6/3	FJ1-10
<b>IEC 60947-7-1 Standard</b>			
Voltage / Impulse Voltage	800 V/8 kV	800 V/8 kV	800 V/8 kV
<b>Maximum Current</b>	<b>41 A</b>	<b>41 A</b>	<b>57 A</b>
Pollution Degree/Voltage Category/ Material Group	3/III/ I	3/III/ I	3/III/ I
Insulating Material	PA66	PA66	PA66
Inflammability Class (acc. to UL94)	V0	V0	V0
<b>Connection Capacity</b>			
<b>Wire Range</b>	0.2~6 mm <sup>2</sup>	0.2~6 mm <sup>2</sup>	0.2~10 mm <sup>2</sup>
American Wire Gauge	24~10 AWG	24~10 AWG	24~8 AWG
Wiring Type	Front-entry	Front-entry	Front-entry
Stripping Length	12~13 mm/0.49 in	12~13 mm/0.49 in	12~13 mm/0.49 in
<b>Dimensions</b>			
Length	74.5 mm/2.93 in	93 mm/3.66 in	78 mm/3.07 in
<b>Width</b>	<b>8 mm/0.315 in</b>	<b>8 mm/0.315 in</b>	<b>10 mm/0.394 in</b>
Height	32.5 mm/1.28 in	32.5 mm/1.28 in	35 mm/1.38 in



Type	FJ1-6/D	FJ1-6/D3	FJ1-10/D
<b>IEC 60947-7-2 Standard</b>			
Impulse Voltage	8 kV	8 kV	8 kV
Pollution Degree/Voltage Category/ Material Group	3/III/ I	3/III/ I	3/III/ I
Insulating Material	PA66	PA66	PA66
Inflammability Class (acc. to UL94)	V0	V0	V0
<b>Connection Capacity</b>			
<b>Wire Range</b>	0.2~6 mm <sup>2</sup>	0.2~6 mm <sup>2</sup>	0.2~10 mm <sup>2</sup>
American Wire Gauge	24~10 AWG	24~10 AWG	24~8 AWG
Wiring Type	Front-entry	Front-entry	Front-entry
Stripping Length	12~13 mm/0.49 in	12~13 mm/0.49 in	12~13 mm/0.49 in
<b>Dimensions</b>			
Length	74.5 mm/2.93 in	93 mm/3.66 in	78 mm/3.07 in
<b>Width</b>	<b>8 mm/0.315 in</b>	<b>8 mm/0.315 in</b>	<b>10 mm/0.394 in</b>
Height	32.5 mm/1.28 in	32.5 mm/1.28 in	35 mm/1.38 in



Type	FJ1-16
<b>IEC 60947-7-1 Standard</b>	
Voltage / Impulse Voltage	800 V/8 kV
<b>Maximum Current</b>	<b>76 A</b>
Pollution Degree/Voltage Category/ Material Group	3/III/ I
Insulating Material	PA66
Inflammability Class (acc. to UL94)	V0
<b>Connection Capacity</b>	
<b>Wire Range</b>	0.2~16 mm <sup>2</sup>
American Wire Gauge	24~6 AWG
Wiring Type	Front-entry
Stripping Length	16~17 mm/0.65 in
<b>Dimensions</b>	
Length	94.5 mm/3.72 in
<b>Width</b>	<b>12 mm/0.472 in</b>
Height	37.5 mm/1.48 in



Type	FJ1-16/D
<b>IEC 60947-7-2 Standard</b>	
Impulse Voltage	8 kV
Pollution Degree/Voltage Category/ Material Group	3/III/ I
Insulating Material	PA66
Inflammability Class (acc. to UL94)	V0
<b>Connection Capacity</b>	
<b>Wire Range</b>	0.2~16 mm <sup>2</sup>
American Wire Gauge	24~6 AWG
Wiring Type	Front-entry
Stripping Length	16~17 mm/0.65 in
<b>Dimensions</b>	
Length	94.5 mm/3.72 in
<b>Width</b>	<b>12 mm/0.472 in</b>
Height	37.5 mm/1.48 in