

FJ3-2.5



FJ3A-2.5

CERTIFICATION	CQC/CE/RoHS	
MATERIAL		
Size(mm)	6x38x27	
Clamping Spring	Stainless Steel	
Conductor	Tin-Coated Copper	
Housing	PA66/V-0	
ELECTRICAL DATA		
Impulse Voltage(kV)	8	
Standards	IEC 60947-7-1	UL 1059
Voltage(V)	800	600
Current(A)	24	20
WIRING DATA		
Strip Length(mm)	8~9	
Metric Wire(mm ²)	0.08~2.5	
Imperial Wire(AWG)	28~12	
Connection Points	2	
PACKING		
Pcs/Inner Box	200	
Pcs/Master Carton	6000	

CERTIFICATION	CQC/CE/RoHS	
MATERIAL		
Size(mm)	10x38x27	
Clamping Spring	Stainless Steel	
Conductor	Tin-Coated Copper	
Housing	PA66/V-0	
ELECTRICAL DATA		
Impulse Voltage(kV)	8	
Standards	IEC 60947-7-1	UL 1059
Voltage(V)	800	600
Current(A)	24	20
WIRING DATA		
Strip Length(mm)	8~9	
Metric Wire(mm ²)	0.08~2.5	
Imperial Wire(AWG)	28~12	
Connection Points	4	
PACKING		
Pcs/Inner Box	200	
Pcs/Master Carton	4000	

ACCESSORIES

End Plate		
	Model	PG2.5
	Thickness	4mm
	Pcs/Bag	100
Adjacent Jumper		
	Model	TG2.5
	Max Current	16A
	Pcs/Bag	100
Central Marker		
ZB-M	Pcs/Bag	50

ACCESSORIES

End Plate		
	Model	PG2.5
	Thickness	4mm
	Pcs/Bag	100
Adjacent Jumper		
	Model	TG2.5
	Max Current	16A
	Pcs/Bag	100
Central Marker		
ZB-MA	Pcs/Bag	50



FJ4-2.5



FJ4A-2.5

CERTIFICATION	CQC/CE/RoHS	
MATERIAL		
Size(mm)	6x32x22	
Clamping Spring	Stainless Steel	
Conductor	Tin-Coated Copper	
Housing	PA66/V-0	
ELECTRICAL DATA		
Impulse Voltage(kV)	8	
Standards	IEC 60947-7-1	UL 1059
Voltage(V)	800	600
Current(A)	24	20
WIRING DATA		
Strip Length(mm)	8~9	
Metric Wire(mm ²)	0.08~2.5	
Imperial Wire(AWG)	28~12	
Connection Points	2	
PACKING		
Pcs/Inner Box	200	
Pcs/Master Carton	6000	

CERTIFICATION	CQC/CE/RoHS	
MATERIAL		
Size(mm)	10x32x22	
Clamping Spring	Stainless Steel	
Conductor	Tin-Coated Copper	
Housing	PA66/V-0	
ELECTRICAL DATA		
Impulse Voltage(kV)	8	
Standards	IEC 60947-7-1	UL 1059
Voltage(V)	800	600
Current(A)	24	20
WIRING DATA		
Strip Length(mm)	8~9	
Metric Wire(mm ²)	0.08~2.5	
Imperial Wire(AWG)	28~12	
Connection Points	4	
PACKING		
Pcs/Inner Box	200	
Pcs/Master Carton	4000	

ACCESSORIES

End Plate		
	Model	PU2.5
	Thickness	4mm
	Pcs/Bag	100
Adjacent Jumper		
	Model	TG2.5
	Max Current	16A
	Pcs/Bag	100
Central Marker		
ZB-M	Pcs/Bag	50

ACCESSORIES

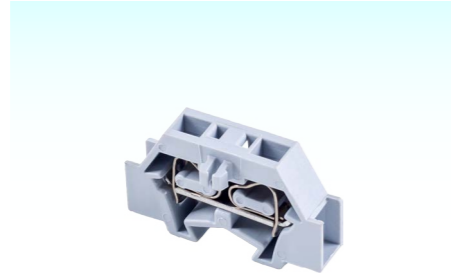
End Plate		
	Model	PU2.5
	Thickness	4mm
	Pcs/Bag	100
Adjacent Jumper		
	Model	TG2.5
	Max Current	16A
	Pcs/Bag	100
Central Marker		
ZB-MA	Pcs/Bag	50

SPRING TYPE TERMINALS

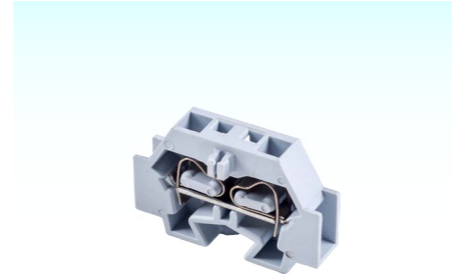
SPRING TYPE TERMINALS



FJ5-1.5



FJ5-2.5



FJ5-4

CERTIFICATION	CQC/CE/RoHS	
MATERIAL		
Size(mm)	5x25x17	
Clamping Spring	Stainless Steel	
Conductor	Tin-Coated Copper	
Housing	PA66/V-0	
ELECTRICAL DATA		
Impulse Voltage(kV)	6	
Standards	IEC 60947-7-1	UL 1059
Voltage(V)	400	300
Current(A)	18	10
WIRING DATA		
Strip Length(mm)	8~9	
Metric Wire(mm ²)	0.08~1.5	
Imperial Wire(AWG)	28~16	
Connection Points	2	
PACKING		
Pcs/Inner Box	200	
Pcs/Master Carton	12000	

CERTIFICATION	CQC/CE/RoHS	
MATERIAL		
Size(mm)	6x28x18	
Clamping Spring	Stainless Steel	
Conductor	Tin-Coated Copper	
Housing	PA66/V-0	
ELECTRICAL DATA		
Impulse Voltage(kV)	6	
Standards	IEC 60947-7-1	UL 1059
Voltage(V)	500	300
Current(A)	24	15
WIRING DATA		
Strip Length(mm)	8~9	
Metric Wire(mm ²)	0.08~2.5	
Imperial Wire(AWG)	28~14	
Connection Points	2	
PACKING		
Pcs/Inner Box	200	
Pcs/Master Carton	9200	

CERTIFICATION	CQC/CE/RoHS	
MATERIAL		
Size(mm)	7x33.4x23	
Clamping Spring	Stainless Steel	
Conductor	Tin-Coated Copper	
Housing	PA66/V-0	
ELECTRICAL DATA		
Impulse Voltage(kV)	8	
Standards	IEC 60947-7-1	UL 1059
Voltage(V)	690	300
Current(A)	24	20
WIRING DATA		
Strip Length(mm)	9~10	
Metric Wire(mm ²)	0.08~4	
Imperial Wire(AWG)	28~12	
Connection Points	2	
PACKING		
Pcs/Inner Box	200	
Pcs/Master Carton	7000	

ACCESSORIES

End Plate		
	Model	PD1.5
	Thickness	2.5mm
	Pcs/Bag	100
Adjacent Jumper		
	Model	TD1.5
	Max Current	10A
	Pcs/Bag	100
Snap-in Mounting Feet		
	Model	U35
	Pcs/Bag	100

ACCESSORIES

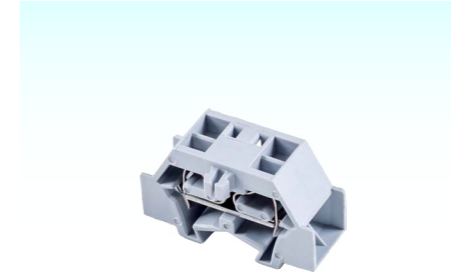
End Plate		
	Model	PD2.5
	Thickness	2.5mm
	Pcs/Bag	100
Adjacent Jumper		
	Model	TD2.5
	Max Current	16A
	Pcs/Bag	100
Snap-in Mounting Feet		
	Model	U35
	Pcs/Bag	100

ACCESSORIES

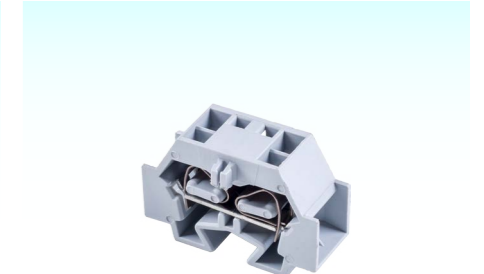
End Plate		
	Model	PD4
	Thickness	2.5mm
	Pcs/Bag	100
Adjacent Jumper		
	Model	TD4
	Max Current	16A
	Pcs/Bag	100
Snap-in Mounting Feet		
	Model	U35
	Pcs/Bag	100



FJ5A-1.5



FJ5A-2.5



FJ5A-4

CERTIFICATION	CQC/CE/RoHS	
MATERIAL		
Size(mm)	8x25x17	
Clamping Spring	Stainless Steel	
Conductor	Tin-Coated Copper	
Housing	PA66/V-0	
ELECTRICAL DATA		
Impulse Voltage(kV)	6	
Standards	IEC 60947-7-1	UL 1059
Voltage(V)	400	300
Current(A)	18	10
WIRING DATA		
Strip Length(mm)	8~9	
Metric Wire(mm ²)	0.08~1.5	
Imperial Wire(AWG)	28~16	
Connection Points	4	
PACKING		
Pcs/Inner Box	200	
Pcs/Master Carton	8000	

CERTIFICATION	CQC/CE/RoHS	
MATERIAL		
Size(mm)	10x28x18	
Clamping Spring	Stainless Steel	
Conductor	Tin-Coated Copper	
Housing	PA66/V-0	
ELECTRICAL DATA		
Impulse Voltage(kV)	6	
Standards	IEC 60947-7-1	UL 1059
Voltage(V)	500	300
Current(A)	24	15
WIRING DATA		
Strip Length(mm)	8~9	
Metric Wire(mm ²)	0.08~2.5	
Imperial Wire(AWG)	28~14	
Connection Points	4	
PACKING		
Pcs/Inner Box	200	
Pcs/Master Carton	6000	

CERTIFICATION	CQC/CE/RoHS	
MATERIAL		
Size(mm)	12x33.4x23	
Clamping Spring	Stainless Steel	
Conductor	Tin-Coated Copper	
Housing	PA66/V-0	
ELECTRICAL DATA		
Impulse Voltage(kV)	8	
Standards	IEC 60947-7-1	UL 1059
Voltage(V)	690	600
Current(A)	32	20
WIRING DATA		
Strip Length(mm)	9~10	
Metric Wire(mm ²)	0.08~4	
Imperial Wire(AWG)	28~12	
Connection Points	4	
PACKING		
Pcs/Inner Box	100	
Pcs/Master Carton	3000	

ACCESSORIES

End Plate		
	Model	PD1.5
	Thickness	2.5mm
	Pcs/Bag	100
Adjacent Jumper		
	Model	TD1.5
	Max Current	10A
	Pcs/Bag	100
Snap-in Mounting Feet		
	Model	U35
	Pcs/Bag	100

ACCESSORIES

End Plate		
	Model	PD2.5
	Thickness	2.5mm
	Pcs/Bag	100
Adjacent Jumper		
	Model	TD2.5
	Max Current	16A
	Pcs/Bag	100
Snap-in Mounting Feet		
	Model	U35
	Pcs/Bag	100

ACCESSORIES

End Plate		
	Model	PD4
	Thickness	2.5mm
	Pcs/Bag	100
Adjacent Jumper		
	Model	TD4
	Max Current	16A
	Pcs/Bag	100
Snap-in Mounting Feet		
	Model	U35
	Pcs/Bag	100

SPRING TYPE TERMINALS

SPRING TYPE TERMINALS